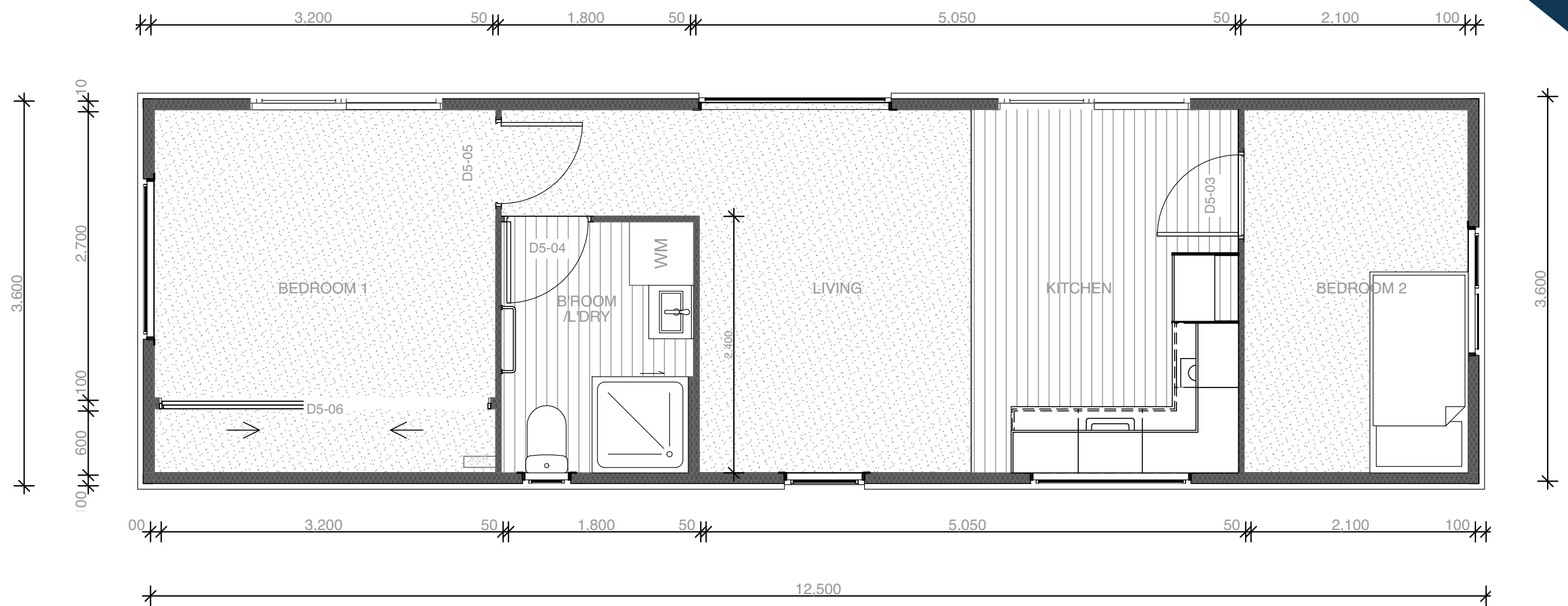


PRICED FROM
\$154,990
 + delivery



THE SANTANA V1 12.5 x 3.6m² | 45m² 2 Bedroom Bathroom Kitchen Wheels Available PREMIUM PORTABLES

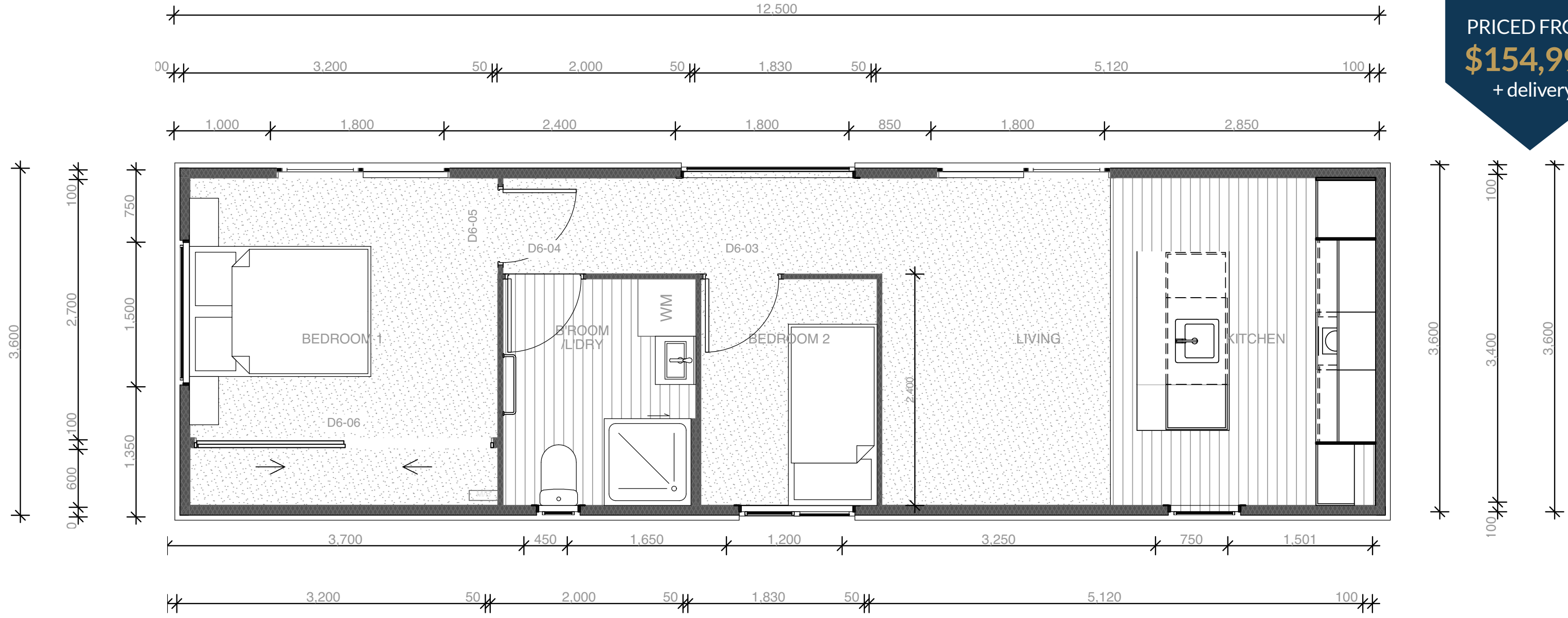
- Includes**
- Code of Compliance
 - Electrical & gas certificates
 - 32 amp power socket
 - 13x Double powerpoints
 - 9x internal LED down lights
 - 4x external LED lights
 - Fully insulated
 - 900 x 900mm shower

- Gravity-fed plumbing
- Bathroom vanity & extractor fan
- Towel rail & toilet roll holder
- Gas Califont for hot water
- Thermal double glazing
- 4kw Heatpump
- Smoke detectors
- 8x Windows
- 2x Ranch sliders

- Kitchen includes island & pendant
- Bathroom
- Oven
- 2 Burner hob
- In-built range hood
- Large walk-in wardrobe
- 2x 600mm wardrobes
- Carpet/vinyl
- Free design consultation

- Additional Extras**
- Composite timber cladding
 - Trellis
 - Wheels/ Drawbar /Stabilisers
 - Interior Wallpaper
 - Blinds or curtains
 - Engineered stone bench top
 - Gas hob
 - Appliances
 - Ventilation system
 - Heated towel rails
 - Shower dome
 - LED mirror

PRICED FROM
\$154,990
 + delivery



THE SANTANA V2

12.5 x 3.6m² | 45m²
 2 Bedroom
 Bathroom
 Kitchen
 Wheels Available



- Includes**
- Code of Compliance
 - Electrical & gas certificates
 - 32 amp power socket
 - 13x Double powerpoints
 - 9x internal LED down lights
 - 4x external LED lights
 - Fully insulated
 - 900 x 900mm shower

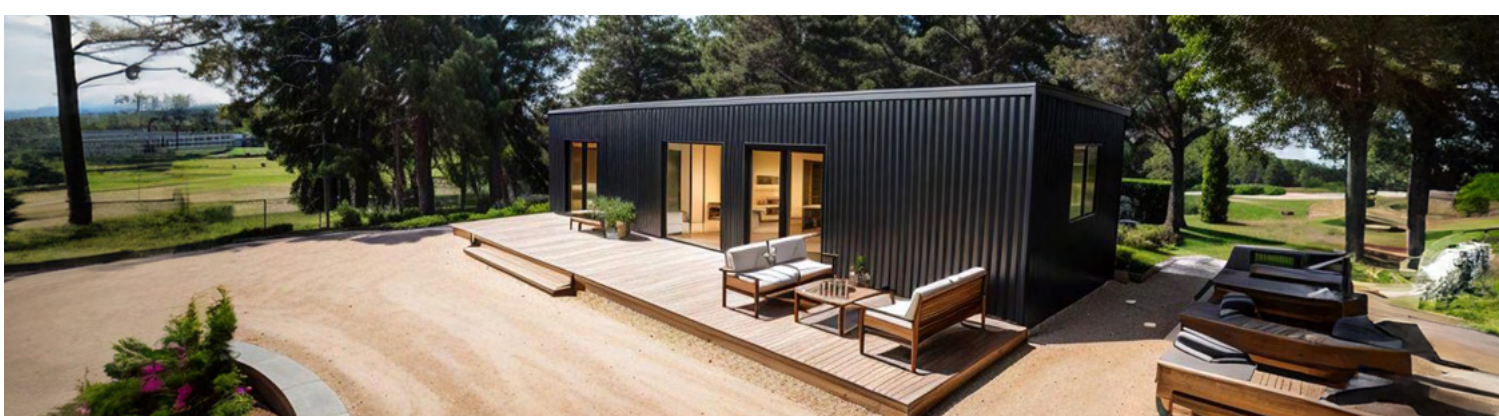
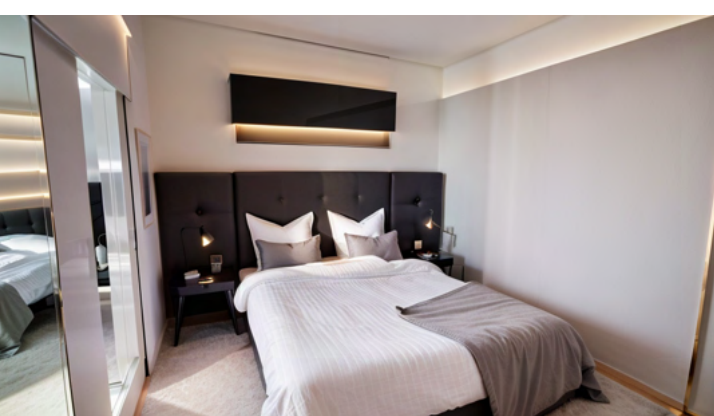
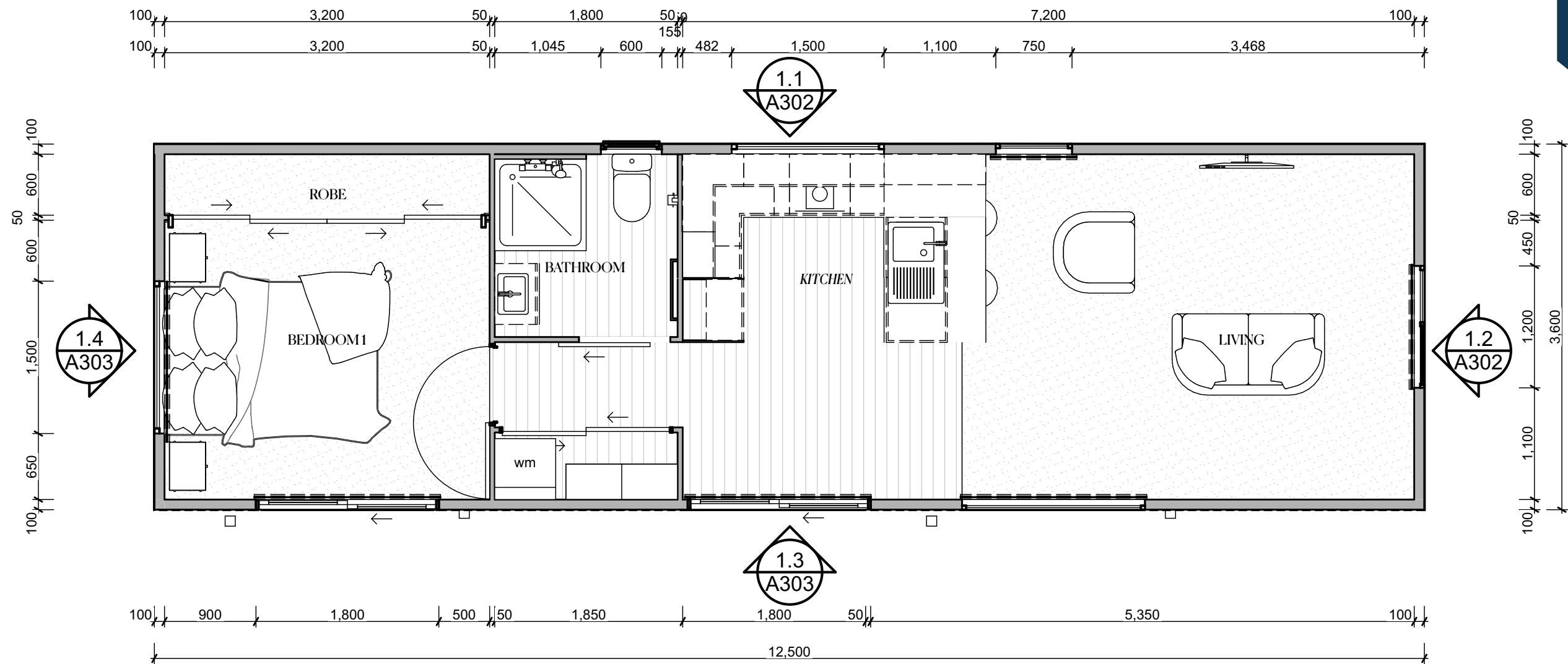
- Gravity-fed plumbing
- Bathroom vanity & extractor fan
- Towel rail & toilet roll holder
- Gas Califont for hot water
- Thermal double glazing
- 4kw Heatpump
- Smoke detectors
- 8x Windows
- 2x Ranch sliders

- Kitchen includes island & pendant
- Bathroom
- Oven
- 2 Burner hob
- In-built range hood
- Large walk-in wardrobe
- 2x 600mm wardrobes
- Carpet/vinyl
- Free design consultation

Additional Extras

- Composite timber cladding
- Trellis
- Wheels/ Drawbar /Stabilisers
- Interior Wallpaper
- Blinds or curtains
- Engineered stone bench top
- Gas hob
- Appliances
- Ventilation system
- Heated towel rails
- Shower dome
- LED mirror

PRICED FROM
\$154,990
 + delivery



THE SANTANA V3

12.5 x 3.6m² | 45m²
 1 Bedroom
 Bathroom
 Kitchen
 Wheels Available



- Includes**
- Code of Compliance
 - Electrical & gas certificates
 - 32 amp power socket
 - 13x Double powerpoints
 - 9x internal LED down lights
 - 4x external LED lights
 - Fully insulated
 - 900 x 900mm shower

- Gravity-fed plumbing
- Bathroom vanity & extractor fan
- Towel rail & toilet roll holder
- Gas Califont for hot water
- Thermal double glazing
- 4kw Heatpump
- Smoke detectors
- 8x Windows
- 2x Ranch sliders

- Kitchen includes island & pendant
- Bathroom
- Oven
- 2 Burner hob
- In-built range hood
- Large walk-in wardrobe
- Carpet/vinyl
- Free design consultation

Additional Extras

- Composite timber cladding
- Trellis
- Wheels/ Drawbar /Stabilisers
- Interior Wallpaper
- Blinds or curtains
- Engineered stone bench top
- Gas hob
- Appliances
- Ventilation system
- Heated towel rails
- Shower dome
- LED mirror

PRICED FROM
\$154,990
 + delivery



THE SANTANA V4

12.5 x 3.6m² | 45m²
1 Bedroom
Bathroom
Kitchen
Wheels Available
PREMIUM PORTABLES

- Includes**
- Code of Compliance
 - Electrical & gas certificates
 - 32 amp power socket
 - 13x Double powerpoints
 - 9x internal LED down lights
 - 4x external LED lights
 - Fully insulated
 - 900 x 900mm shower

- Gravity-fed plumbing
- Bathroom vanity & extractor fan
- Towel rail & toilet roll holder
- Gas Califont for hot water
- Thermal double glazing
- 4kw Heatpump
- Smoke detectors
- 8x Windows
- 2x Ranch sliders

- Kitchen includes island & pendant
- Bathroom
- Oven
- 2 Burner hob
- In-built range hood
- Large walk-in wardrobe
- Carpet/vinyl
- Free design consultation

- Additional Extras**
- Composite timber cladding
 - Trellis
 - Wheels/ Drawbar /Stabilisers
 - Interior Wallpaper
 - Blinds or curtains
 - Engineered stone bench top
 - Gas hob
 - Appliances
 - Ventilation system
 - Heated towel rails
 - Shower dome
 - LED mirror