







THE BELMONT V1  14 x 4.2m² | 58m²  3 Bedroom  Bathroom  Kitchen  Wheels Available  **PREMIUM PORTABLES**

Includes

- Double powerpoints throughout
- Carpet/vinyl
- LED lights in interior & exterior
- 4kw Heatpump
- Smoke detectors
- Customisable colours
- Free consultation with our own interior designer

- Thermal double glazing
- 7x Windows
- 2x Ranch sliders
- Kitchen
- Bathroom
- Oven
- 2 Burner hob
- Range hood

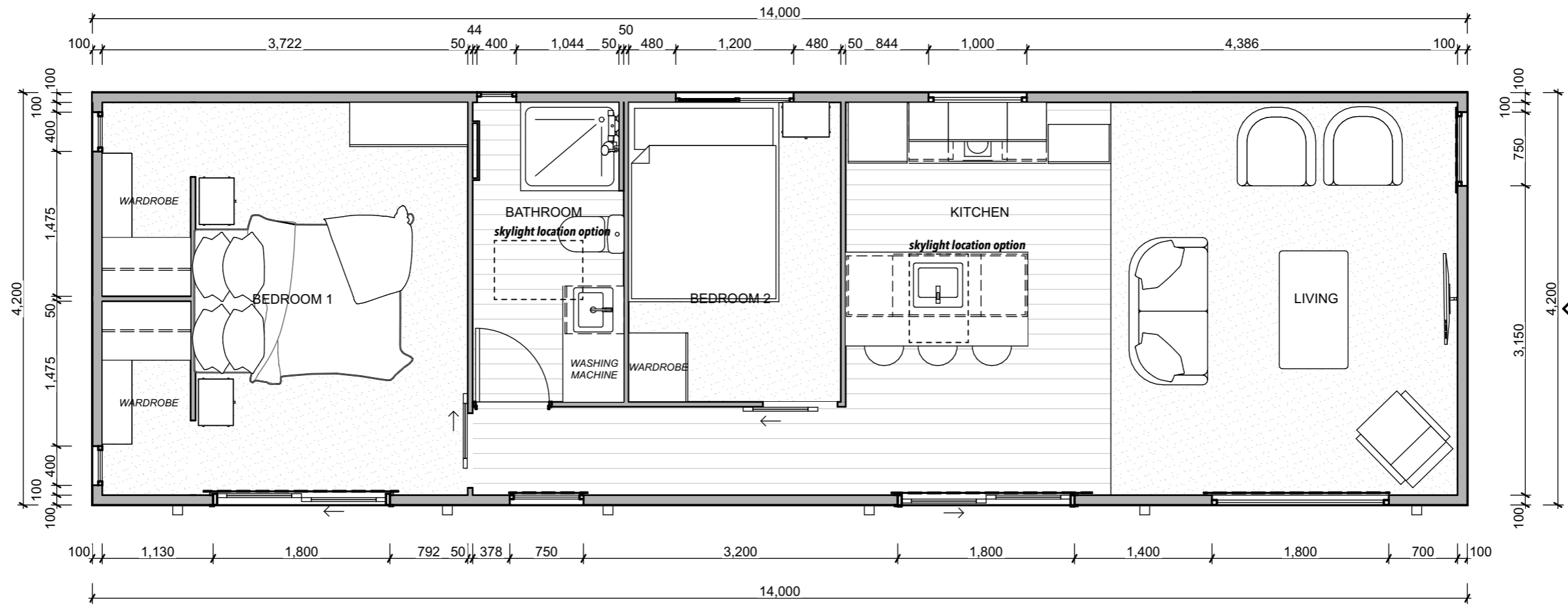
Additional Extras

- TV Bracket
- Interior Wallpaper
- Blinds or curtains
- Internal timber panelling
- USB
- Mirrored storage cabinet
- Gas hob
- 4 Burner hob

- Engineered stone bench top
- Shower dome
- Wardrobe upgrade
- Bench top splash back wall wrap
- Trellis
- Composite timber battens
- Wheels/ Drawbar /Stabilisers
- 2x options for a skylight
- Washing machine

- Microwave
- Fridge
- Dishwasher
- Feature wall paper
- Heated towel rails
- Lossnay Ventilation
- LED mirror
- Hot water cylinder

1.1
A302



1.4
A303

1.2
A302

1.3
A303



THE BELMONT V2



14 x 4.2m² | 58m²



2 Bedroom



Bathroom



Kitchen



Wheels Available



PREMIUM PORTABLES

Includes

- Double powerpoints throughout
- Carpet/vinyl
- LED lights in interior & exterior
- 4kw Heatpump
- Smoke detectors
- Customisable colours
- Free consultation with our own interior designer

- Thermal double glazing
- 7x Windows
- 2x Ranch sliders
- Kitchen
- Bathroom
- Oven
- 2 Burner hob
- Range hood

Additional Extras

- TV Bracket
- Interior Wallpaper
- Blinds or curtains
- Internal timber panelling
- USB
- Mirrored storage cabinet
- Gas hob
- 4 Burner hob

- Engineered stone bench top
- Shower dome
- Wardrobe upgrade
- Bench top splash back wall wrap
- Trellis
- Composite timber battens
- Wheels/ Drawbar /Stabilisers
- 2x options for a skylight
- Washing machine

- Microwave
- Fridge
- Dishwasher
- Feature wall paper
- Heated towel rails
- Lossnay Ventilation
- LED mirror
- Hot water cylinder